

Engelsmann Big Bag Connection: easy, safe, dust-tight.



- JEL SafeConnect

JEL SafeConnect: Always connected safely

Different heights of inlet and outlet nozzles often mean time-consuming adjustments when connecting the big bags. The module JEL SafeConnect offers the right solution for easy and safe connection of big bags in different sizes. The system can be applied for emptying and filling of big bags with and without inliner. It is suitable for different outlet diameters without requiring any modification and can be retrofitted subsequently.



2

Short Description

- safe, dust-tight connection of big bags
- suitable for big bags with different inlet/outlet lengths
- can be used for filling and emptying of big bags with and without inliner
- available for inlet/outlet nozzles with a diameter of 250 to 400 mm
- special sizes are available upon request
- available for zones with and without compressed-air connection

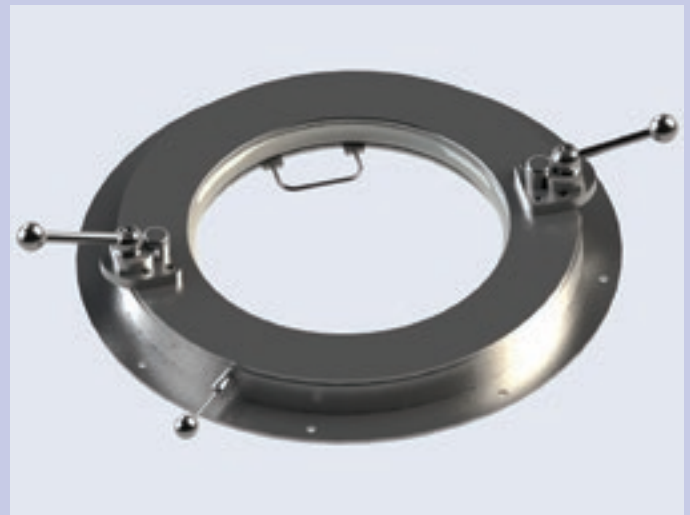
Convincing Facts

- easy operating and cleaning
- very few wear parts
- can be retrofitted to existing big-bag systems or transfer points
- space-saving due to compact construction
- expandable with modules to protect the environment, products and persons
- different big-bag outlet diameters can be used without modifying the connection system
- avoiding of costs that could result from product contamination (only for the version with additional equipment)

Range of Application

Suitable for all usual big-bags with filling or emptying nozzle. The JEL SafeConnect system can be used in all areas of the chemical, pharmaceutical, food, plastics and similar industries.





Mode of Operation (version with sealing ring)

Mode of Operation (version with locking device)

The big bag filled with bulk material is brought into the emptying station and positioned above the JEL SafeConnect system. The outlet of the big bag is put over a flexible adapter ring, into the housing of the system and connected to it.

Due to the expansion of the integrated pneumatic sealing the outlet of the big bag is fixed ensuring dust-tight connection.

The outlet of the big bag is opened at the point where it was tied up and the bulk material is discharged into the following process. The JEL SafeConnect system is also suitable for filling big bags and drums with inliner.

Contrary to the version with pneumatic sealing, the JEL SafeConnect system can also be operated without using compressed air. For this purpose, the filled big bag is brought into the emptying station and positioned above the connecting system.

Moving of two levers results in fixing of the big-bag nozzle by a metal ring ensuring dust-tight connection of the big bag.

The big bag is then opened at the point where it was tied up and the material is discharged into the following process. The JEL SafeConnect system with mechanic locking device is also suitable for filling big bags and drums with inliner and is used in areas where no compressed-air connection is available.



- Frankenthaler Str. 137-141
- 67059 Ludwigshafen, Germany
- Phone: +49 (0)621 59002-0
- Fax: +49 (0)621 59002-76
- info@engelsmann.de
- www.engelsmann.com

